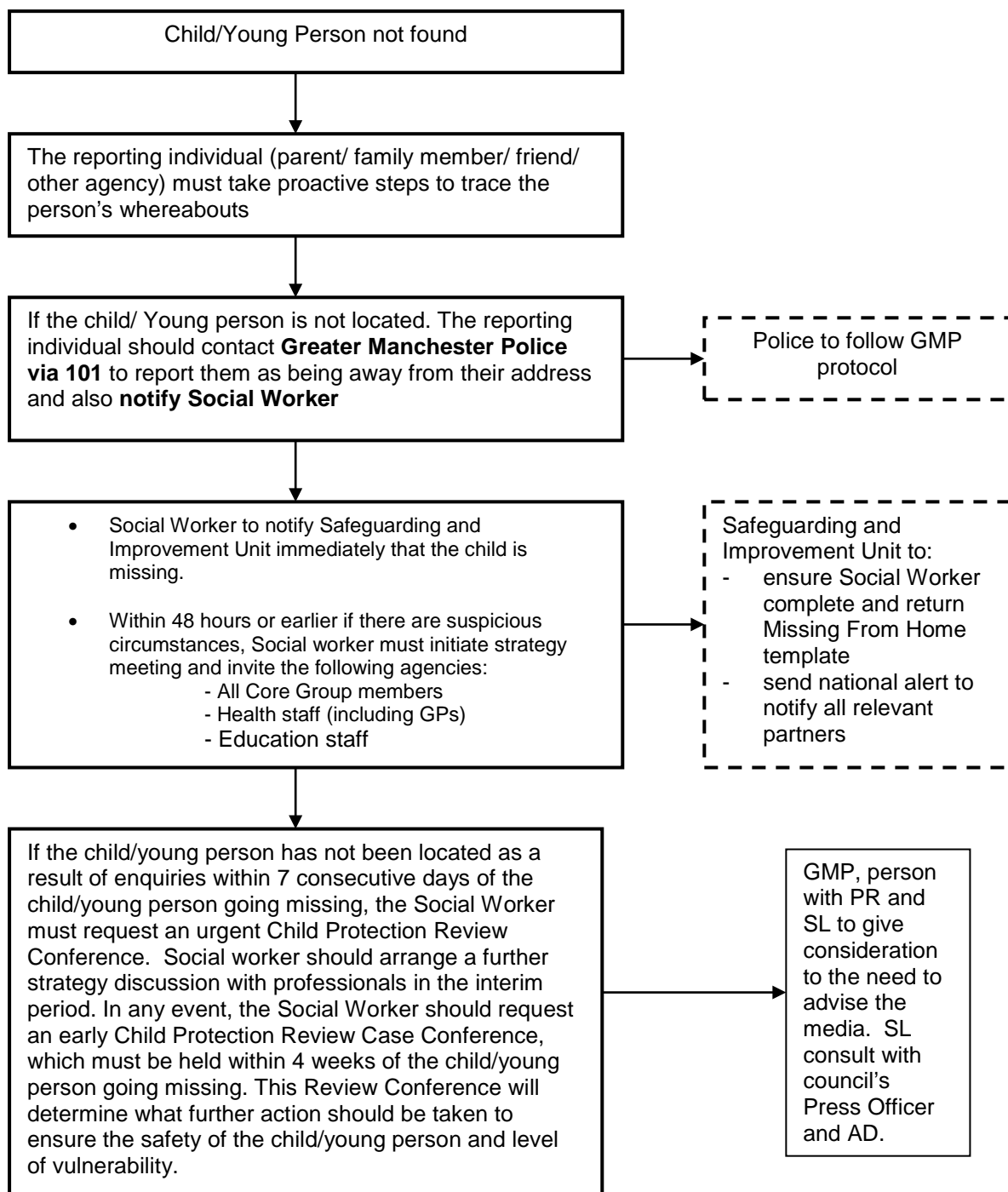


Flowchart 3: Missing from Parental Home – Child/YP subject of a Child Protection Plan



THIS PROCEDURE APPLIES TO ANY CHILD/YOUNG PERSON UNDER THE AGE OF 18 AND REFERS TO CHILDREN CLASSED AS MISSING BY GMP. ANY CHILD AGED 12 AND UNDER NOT FOUND IS AUTOMATICALLY CALSSED AS MISSING.